

CHAPTER 15

Light



Figure 15.1 Human eyes detect these orange *sea goldie* fish swimming over a coral reef in the blue waters of the Gulf of Eilat, in the Red Sea, using visible light. (credit: David Darom, Wikimedia Commons)

Chapter Outline

[15.1 The Electromagnetic Spectrum](#)

[15.2 The Behavior of Electromagnetic Radiation](#)

INTRODUCTION The beauty of a coral reef, the warm radiance of sunshine, the sting of sunburn, the X-ray revealing a broken bone, even microwave popcorn—all are brought to us by electromagnetic waves. The list of the various types of electromagnetic waves, ranging from radio transmission waves to nuclear gamma-ray (γ -ray) emissions, is interesting in itself.

Even more intriguing is that all of these different phenomena are manifestations of the same thing—electromagnetic waves (see [Figure 15.1](#)). What are electromagnetic waves? How are they created, and how do they travel? How can we understand their widely varying properties? What is the relationship between electric and magnetic effects? These and other questions will be explored.

15.1 The Electromagnetic Spectrum

Section Learning Objectives

By the end of this section, you will be able to do the following:

- Define the electromagnetic spectrum, and describe it in terms of frequencies and wavelengths
- Describe and explain the differences and similarities of each section of the electromagnetic spectrum and the applications of radiation from those sections

Section Key Terms

electric field electromagnetic radiation (EMR) magnetic field Maxwell's equations

The Electromagnetic Spectrum

We generally take light for granted, but it is a truly amazing and mysterious form of energy. Think about it: Light travels to Earth across millions of kilometers of empty space. When it reaches us, it interacts with matter in various ways to generate almost all the energy needed to support life, provide heat, and cause weather patterns. Light is a form of **electromagnetic radiation (EMR)**. The term *light* usually refers to visible light, but this is not the only form of EMR. As we will see, visible light occupies a narrow band in a broad range of types of electromagnetic radiation.

Electromagnetic radiation is generated by a moving electric charge, that is, by an electric current. As you will see when you study electricity, an electric current generates both an **electric field, E** , and a **magnetic field, B** . These fields are perpendicular to each other. When the moving charge oscillates, as in an alternating current, an EM wave is propagated. [Figure 15.2](#) shows how an electromagnetic wave moves away from the source—indicated by the \sim symbol.



WATCH PHYSICS

Electromagnetic Waves and the Electromagnetic Spectrum

This video, link below, is closely related to the following figure. If you have questions about EM wave properties, the EM spectrum, how waves propagate, or definitions of any of the related terms, the answers can be found in this [video](http://www.openstax.org/l/28EMWaves) (<http://www.openstax.org/l/28EMWaves>).

[Click to view content \(https://www.openstax.org/l/28EMWaves\)](https://www.openstax.org/l/28EMWaves)

GRASP CHECK

In an electromagnetic wave, how are the magnetic field, the electric field, and the direction of propagation oriented to each other?

- All three are parallel to each other and are along the x -axis.
- All three are mutually perpendicular to each other.
- The electric field and magnetic fields are parallel to each other and perpendicular to the direction of propagation.
- The magnetic field and direction of propagation are parallel to each other along the y -axis and perpendicular to the electric field.

Virtual Physics

Radio Waves and Electromagnetic Fields

[Click to view content \(https://www.openstax.org/l/28Radiowaves\)](https://www.openstax.org/l/28Radiowaves)

This simulation demonstrates wave propagation. The EM wave is propagated from the broadcast tower on the left, just as in [Figure 15.2](#). You can make the wave yourself or allow the animation to send it. When the wave reaches the antenna on the right, it causes an oscillating current. This is how radio and television signals are transmitted and received.

GRASP CHECK

Where do radio waves fall on the electromagnetic spectrum?

- Radio waves have the same wavelengths as visible light.
- Radio waves fall on the high-frequency side of visible light.
- Radio waves fall on the short-wavelength side of visible light.
- Radio waves fall on the low-frequency side of visible light.

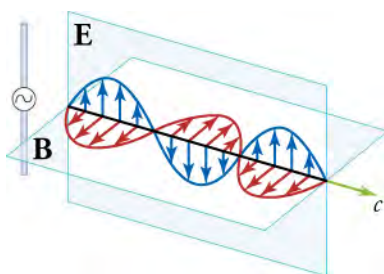


Figure 15.2 A part of the electromagnetic wave sent out from an oscillating charge at one instant in time. The electric and magnetic fields (**E** and **B**) are in phase, and they are perpendicular to each other and to the direction of propagation. For clarity, the waves are shown only along one direction, but they propagate out in other directions too.

From your study of sound waves, recall these features that apply to all types of waves:

- Wavelength—The distance between two wave crests or two wave troughs, expressed in various metric measures of distance
- Frequency—The number of wave crests that pass a point per second, expressed in hertz (Hz or s^{-1})
- Amplitude: The height of the crest above the null point

As mentioned, electromagnetic radiation takes several forms. These forms are characterized by a range of frequencies. Because frequency is inversely proportional to wavelength, any form of EMR can also be represented by its range of wavelengths. [Figure 15.3](#) shows the frequency and wavelength ranges of various types of EMR. With how many of these types are you familiar?

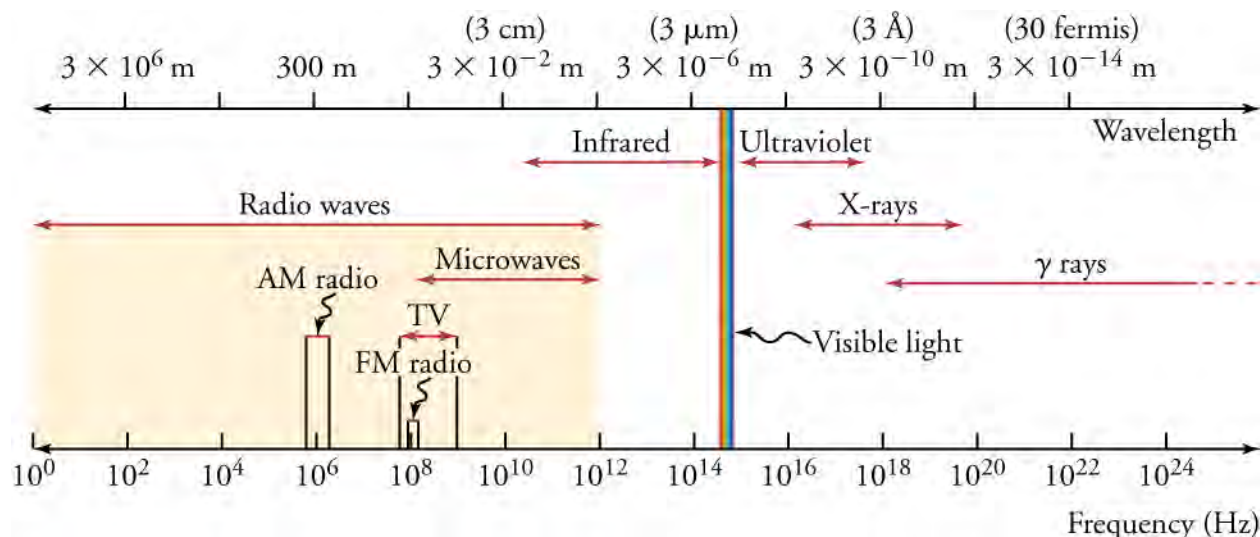


Figure 15.3 The electromagnetic spectrum, showing the major categories of electromagnetic waves. The range of frequencies and wavelengths is remarkable. The dividing line between some categories is distinct, whereas other categories overlap.

Take a few minutes to study the positions of the various types of radiation on the EM spectrum, above. Sometimes all radiation with frequencies lower than those of visible light are referred to as infrared (IR) radiation. This includes radio waves, which overlap with the frequencies used for media broadcasts of TV and radio signals. The microwave radiation that you see on the diagram is the same radiation that is used in a microwave oven. What we feel as radiant heat is also a form of low-frequency EMR.

All the high-frequency radiation to the right of visible light is sometimes referred to as ultraviolet (UV) radiation. This includes X-rays and gamma (γ) rays. The narrow band that is visible light extends from lower-frequency red light to higher-frequency violet light, thus the terms are *infrared* (below red) and *ultraviolet* (beyond violet).



BOUNDLESS PHYSICS

Maxwell's Equations

The Scottish physicist James Clerk Maxwell (1831–1879) is regarded widely to have been the greatest theoretical physicist of the

nineteenth century. Although he died young, Maxwell not only formulated a complete electromagnetic theory, represented by **Maxwell's equations**, he also developed the kinetic theory of gases, and made significant contributions to the understanding of color vision and the nature of Saturn's rings.

Maxwell brought together all the work that had been done by brilliant physicists, such as Ørsted, Coulomb, Ampere, Gauss, and Faraday, and added his own insights to develop the overarching theory of electromagnetism. Maxwell's equations are paraphrased here in words because their mathematical content is beyond the level of this text. However, the equations illustrate how apparently simple mathematical statements can elegantly unite and express a multitude of concepts—why mathematics is the language of science.

Maxwell's Equations

1. Electric field lines originate on positive charges and terminate on negative charges. The electric field is defined as the force per unit charge on a test charge, and the strength of the force is related to the electric constant, ϵ_0 .
2. Magnetic field lines are continuous, having no beginning or end. No magnetic monopoles are known to exist. The strength of the magnetic force is related to the magnetic constant, μ_0 .
3. A changing magnetic field induces an electromotive force (emf) and, hence, an electric field. The direction of the emf opposes the change, changing direction of the magnetic field.
4. Magnetic fields are generated by moving charges or by changing electric fields.

Maxwell's complete theory shows that electric and magnetic forces are not separate, but different manifestations of the same thing—the electromagnetic force. This classical unification of forces is one motivation for current attempts to unify the four basic forces in nature—the gravitational, electromagnetic, strong nuclear, and weak nuclear forces. The weak nuclear and electromagnetic forces have been unified, and further unification with the strong nuclear force is expected; but, the unification of the gravitational force with the other three has proven to be a real head-scratcher.

One final accomplishment of Maxwell was his development in 1855 of a process that could produce color photographic images. In 1861, he and photographer Thomas Sutton worked together on this process. The color image was achieved by projecting red, blue, and green light through black-and-white photographs of a tartan ribbon, each photo itself exposed in different-colored light. The final image was projected onto a screen (see [Figure 15.4](#)).

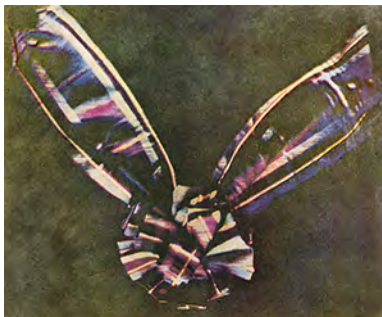


Figure 15.4 Maxwell and Sutton's photograph of a colored ribbon. This was the first durable color photograph. The plaid tartan of the Scots made a *colorful* photographic subject.

GRASP CHECK

Describe electromagnetic force as explained by Maxwell's equations.

- a. According to Maxwell's equations, electromagnetic force gives rise to electric force and magnetic force.
- b. According to Maxwell's equations, electric force and magnetic force are different manifestations of electromagnetic force.
- c. According to Maxwell's equations, electric force is the cause of electromagnetic force.
- d. According to Maxwell's equations, magnetic force is the cause of electromagnetic force.

Characteristics of Electromagnetic Radiation

All the EM waves mentioned above are basically the same form of radiation. They can all travel across empty space, and they all

travel at the speed of light in a vacuum. The basic difference between types of radiation is their differing frequencies. Each frequency has an associated wavelength. As frequency increases across the spectrum, wavelength decreases. Energy also increases with frequency. Because of this, higher frequencies penetrate matter more readily. Some of the properties and uses of the various EM spectrum bands are listed in [Table 15.1](#).

Types of EM Waves	Production	Applications	Life Sciences Aspect	Issues
Radio and TV	Accelerating charges	Communications, remote controls	MRI	Requires controls for band use
Microwaves	Accelerating charges & thermal agitation	Communications, microwave ovens, radar	Deep heating	Cell phone use
Infrared	Thermal agitation & electronic transitions	Thermal imaging, heating	Absorption by atmosphere	Greenhouse effect
Visible Light	Thermal agitation & electronic transitions	All pervasive	Photosynthesis, human vision	
Ultraviolet	Thermal agitation & electronic transitions	Sterilization, slowing abnormal growth of cells	Vitamin D production	Ozone depletion, causes cell damage
X-rays	Inner electronic transitions & fast collisions	Medical, security	Medical diagnosis, cancer therapy	Causes cell damage
Gamma Rays	Nuclear decay	Nuclear medicine, security	Medical diagnosis, cancer therapy	Causes cell damage, radiation damage

Table 15.1 Electromagnetic Waves This table shows how each type of EM radiation is produced, how it is applied, as well as environmental and health issues associated with it.

The narrow band of visible light is a combination of the colors of the rainbow. [Figure 15.5](#) shows the section of the EM spectrum that includes visible light. The frequencies corresponding to these wavelengths are $4.0 \times 10^{14} \text{ s}^{-1}$ at the red end to $7.9 \times 10^{14} \text{ s}^{-1}$ at the violet end. This is a very narrow range, considering that the EM spectrum spans about 20 orders of magnitude.

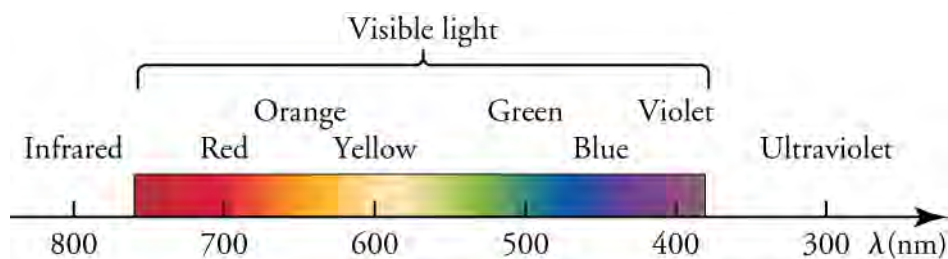


Figure 15.5 A small part of the electromagnetic spectrum that includes its visible components. The divisions between infrared, visible, and ultraviolet are not perfectly distinct, nor are the divisions between the seven rainbow colors

TIPS FOR SUCCESS

Wavelengths of visible light are often given in nanometers, nm. One nm equals 10^{-9} m . For example, yellow light has a wavelength of about 600 nm, or $6 \times 10^{-7} \text{ m}$.

As a child, you probably learned the color wheel, shown on the left in [Figure 15.6](#). It helps if you know what color results when you mix different colors of paint together. Mixing two of the primary *pigment* colors—magenta, yellow, or cyan—together results in a secondary color. For example, mixing cyan and yellow makes green. This is called *subtractive* color mixing. Mixing different colors of *light* together is quite different. The diagram on the right shows *additive* color mixing. In this case, the primary colors are red, green, and blue, and the secondary colors are cyan, magenta, and yellow. Mixing pigments and mixing light are different because materials absorb light by a different set of rules than does the perception of light by the eye. Notice that, when all colors are subtracted, the result is no color, or black. When all colors are added, the result is white light. We see the reverse of this when white sunlight is separated into the visible spectrum by a prism or by raindrops when a rainbow appears in the sky.

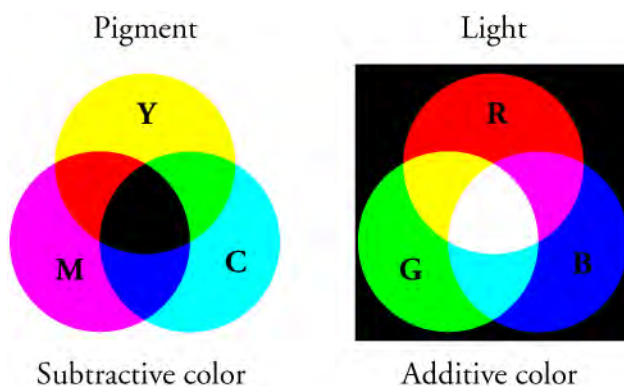


Figure 15.6 Mixing colored pigments follows the subtractive color wheel, and mixing colored light follows the additive color wheel.

Virtual Physics

Color Vision

[Click to view content \(https://www.openstax.org/l/28Colorvision\)](https://www.openstax.org/l/28Colorvision)

This video demonstrates additive color and color filters. Try all the settings except *Photons*.

GRASP CHECK

Explain why only light from a blue bulb passes through the blue filter.

- A blue filter absorbs blue light.
- A blue filter reflects blue light.
- A blue filter absorbs all visible light other than blue light.
- A blue filter reflects all of the other colors of light and absorbs blue light.



LINKS TO PHYSICS

Animal Color Perception

The physics of color perception has interesting links to zoology. Other animals have very different views of the world than humans, especially with respect to which colors can be seen. Color is detected by cells in the eye called *cones*. Humans have three cones that are sensitive to three different ranges of electromagnetic wavelengths. They are called red, blue, and green cones, although these colors do not correspond exactly to the centers of the three ranges. The ranges of wavelengths that each cone detects are red, 500 to 700 nm; green, 450 to 630 nm; and blue, 400 to 500 nm.

Most primates also have three kinds of cones and see the world much as we do. Most mammals other than primates only have two cones and have a less colorful view of things. Dogs, for example see blue and yellow, but are color blind to red and green. You might think that *simpler* species, such as fish and insects, would have less sophisticated vision, but this is not the case. Many birds, reptiles, amphibians, and insects have four or five different cones in their eyes. These species don't have a wider range of perceived colors, but they see more hues, or combinations of colors. Also, some animals, such as bees or rattlesnakes, see a

range of colors that is as broad as ours, but shifted into the ultraviolet or infrared.

These differences in color perception are generally adaptations that help the animals survive. Colorful tropical birds and fish display some colors that are too subtle for us to see. These colors are believed to play a role in the species mating rituals. [Figure 15.7](#) shows the colors visible and the color range of vision in humans, bees, and dogs.

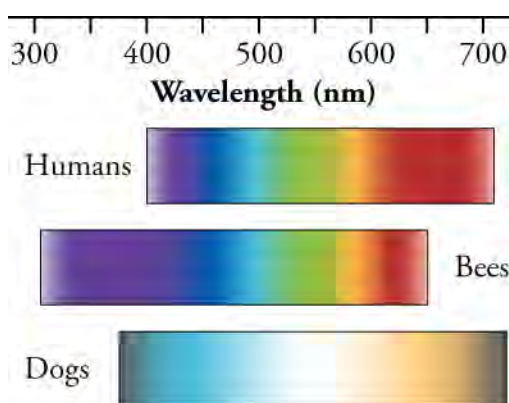


Figure 15.7 Humans, bees, and dogs see colors differently. Dogs see fewer colors than humans, and bees see a different range of colors.

GRASP CHECK

The belief that bulls are enraged by seeing the color red is a misconception. What did you read in this Links to Physics that shows why this belief is incorrect?

- Bulls are color-blind to every color in the spectrum of colors.
- Bulls are color-blind to the blue colors in the spectrum of colors.
- Bulls are color-blind to the red colors in the spectrum of colors.
- Bulls are color-blind to the green colors in the spectrum of colors.

Humans have found uses for every part of the electromagnetic spectrum. We will take a look at the uses of each range of frequencies, beginning with visible light. Most of our uses of visible light are obvious; without it our interaction with our surroundings would be much different. We might forget that nearly all of our food depends on the photosynthesis process in plants, and that the energy for this process comes from the visible part of the spectrum. Without photosynthesis, we would also have almost no oxygen in the atmosphere.

The low-frequency, infrared region of the spectrum has many applications in media broadcasting. Television, radio, cell phone, and remote-control devices all broadcast and/or receive signals with these wavelengths. AM and FM radio signals are both low-frequency radiation. They are in different regions of the spectrum, but that is not their basic difference. AM and FM are abbreviations for *amplitude modulation* and *frequency modulation*. Information in AM signals has the form of changes in *amplitude* of the radio waves; information in FM signals has the form of changes in wave *frequency*.

Another application of long-wavelength radiation is found in microwave ovens. These appliances cook or warm food by irradiating it with EM radiation in the microwave frequency range. Most kitchen microwaves use a frequency of 2.45×10^9 Hz. These waves have the right amount of energy to cause polar molecules, such as water, to rotate faster. Polar molecules are those that have a partial charge separation. The rotational energy of these molecules is given up to surrounding matter as heat. The first microwave ovens were called *Radaranges* because they were based on radar technology developed during World War II.

Radar uses radiation with wavelengths similar to those of microwaves to detect the location and speed of distant objects, such as airplanes, weather formations, and motor vehicles. Radar information is obtained by receiving and analyzing the echoes of microwaves reflected by an object. The speed of the object can be measured using the Doppler shift of the returning waves. This is the same effect you learned about when you studied sound waves. Like sound waves, EM waves are shifted to higher frequencies by an object moving toward an observer, and to lower frequencies by an object moving away from the observer. Astronomers use this same Doppler effect to measure the speed at which distant galaxies are moving away from us. In this case, the shift in frequency is called the *red shift*, because visible frequencies are shifted toward the lower-frequency, red end of the spectrum.

Exposure to any radiation with frequencies greater than those of visible light carries some health hazards. All types of radiation in this range are known to cause cell damage. The danger is related to the high energy and penetrating ability of these EM waves. The likelihood of being harmed by any of this radiation depends largely on the amount of exposure. Most people try to reduce exposure to UV radiation from sunlight by using sunscreen and protective clothing. Physicians still use X-rays to diagnose medical problems, but the intensity of the radiation used is extremely low. [Figure 15.8](#) shows an X-ray image of a patient's chest cavity.

One medical-imaging technique that involves no danger of exposure is magnetic resonance imaging (MRI). MRI is an important imaging and research tool in medicine, producing highly detailed two- and three-dimensional images. Radio waves are broadcast, absorbed, and reemitted in a resonance process that is sensitive to the density of nuclei, usually hydrogen nuclei—protons.

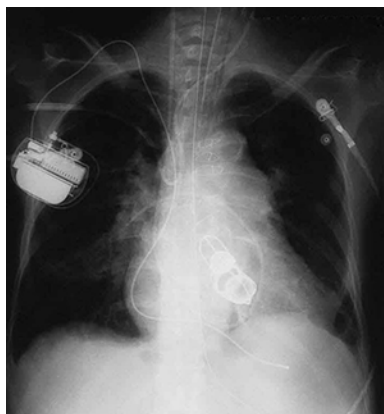


Figure 15.8 This shadow X-ray image shows many interesting features, such as artificial heart valves, a pacemaker, and wires used to close the sternum. (credit: P.P. Urone)

Check Your Understanding

- Identify the fields produced by a moving charged particle.
 - Both an electric field and a magnetic field will be produced.
 - Neither a magnetic field nor an electric field will be produced.
 - A magnetic field, but no electric field will be produced.
 - Only the electric field, but no magnetic field will be produced.
- X-rays carry more energy than visible light. Compare the frequencies and wavelengths of these two types of EM radiation.
 - Visible light has higher frequencies and shorter wavelengths than X-rays.
 - Visible light has lower frequencies and shorter wavelengths than X-rays.
 - Visible light has higher frequencies and longer wavelengths than X-rays.
 - Visible light has lower frequencies and longer wavelengths than X-rays.
- How does wavelength change as frequency increases across the EM spectrum?
 - The wavelength increases.
 - The wavelength first increases and then decreases.
 - The wavelength first decreases and then increases.
 - The wavelength decreases.
- Why are X-rays used in imaging of broken bones, rather than radio waves?
 - X-rays have higher penetrating energy than radio waves.
 - X-rays have lower penetrating energy than radio waves.
 - X-rays have a lower frequency range than radio waves.
 - X-rays have longer wavelengths than radio waves.
- Identify the fields that make up an electromagnetic wave.
 - both an electric field and a magnetic field
 - neither a magnetic field nor an electric field

- c. only a magnetic field, but no electric field
- d. only an electric field, but no magnetic field

15.2 The Behavior of Electromagnetic Radiation

Section Learning Objectives

By the end of this section, you will be able to do the following:

- Describe the behavior of electromagnetic radiation
- Solve quantitative problems involving the behavior of electromagnetic radiation

Section Key Terms

illuminance interference lumens luminous flux lux polarized light

Types of Electromagnetic Wave Behavior

In a vacuum, all electromagnetic radiation travels at the same incredible speed of 3.00×10^8 m/s, which is equal to 671 million miles per hour. This is one of the fundamental physical constants. It is referred to as the speed of light and is given the symbol c . The space between celestial bodies is a near vacuum, so the light we see from the Sun, stars, and other planets has traveled here at the speed of light. Keep in mind that all EM radiation travels at this speed. All the different wavelengths of radiation that leave the Sun make the trip to Earth in the same amount of time. That trip takes 8.3 minutes. Light from the nearest star, besides the Sun, takes 4.2 years to reach Earth, and light from the nearest galaxy—a dwarf galaxy that orbits the Milky Way—travels 25,000 years on its way to Earth. You can see why we call very long distances *astronomical*.

When light travels through a physical medium, its speed is always less than the speed of light. For example, light travels in water at three-fourths the value of c . In air, light has a speed that is just slightly slower than in empty space: 99.97 percent of c . Diamond slows light down to just 41 percent of c . When light changes speeds at a boundary between media, it also changes direction. The greater the difference in speeds, the more the path of light bends. In other chapters, we look at this bending, called *refraction*, in greater detail. We introduce refraction here to help explain a phenomenon called thin-film interference.

Have you ever wondered about the rainbow colors you often see on soap bubbles, oil slicks, and compact discs? This occurs when light is both refracted by and reflected from a very thin film. The diagram shows the path of light through such a thin film. The symbols n_1 , n_2 , and n_3 indicate that light travels at different speeds in each of the three materials. Learn more about this topic in the chapter on diffraction and interference.

[Figure 15.9](#) shows the result of thin film interference on the surface of soap bubbles. Because ray 2 travels a greater distance, the two rays become *out of phase*. That is, the crests of the two emerging waves are no longer moving together. This causes **interference**, which reinforces the intensity of the wavelengths of light that create the bands of color. The color bands are separated because each color has a different wavelength. Also, the thickness of the film is not uniform, and different thicknesses cause colors of different wavelengths to interfere in different places. Note that the film must be very, very thin—somewhere in the vicinity of the wavelengths of visible light.

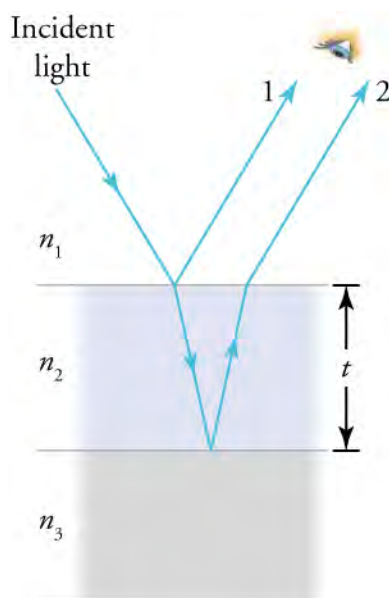


Figure 15.9 Light striking a thin film is partially reflected (ray 1) and partially refracted at the top surface. The refracted ray is partially reflected at the bottom surface and emerges as ray 2. These rays will interfere in a way that depends on the thickness of the film and the indices of refraction of the various media.

You have probably experienced how polarized sunglasses reduce glare from the surface of water or snow. The effect is caused by the wave nature of light. Looking back at , we see that the electric field moves in only one direction perpendicular to the direction of propagation. Light from most sources vibrates in all directions perpendicular to propagation. Light with an electric field that vibrates in only one direction is called *polarized*. A diagram of **polarized light** would look like .

Polarized glasses are an example of a polarizing filter. These glasses absorb most of the horizontal light waves and transmit the vertical waves. This cuts down glare, which is caused by horizontal waves. [Figure 15.10](#) shows how waves traveling along a rope can be used as a model of how a polarizing filter works. The oscillations in one rope are in a vertical plane and are said to be vertically polarized. Those in the other rope are in a horizontal plane and are horizontally polarized. If a vertical slit is placed on the first rope, the waves pass through. However, a vertical slit blocks the horizontally polarized waves. For EM waves, the direction of the electric field oscillation is analogous to the disturbances on the ropes.

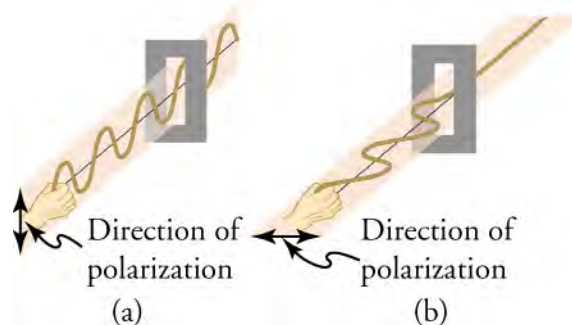


Figure 15.10 The transverse oscillations in one rope are in a vertical plane, and those in the other rope are in a horizontal plane. The first is said to be vertically polarized, and the other is said to be horizontally polarized. Vertical slits pass vertically polarized waves and block horizontally polarized waves.

Light can also be polarized by reflection. Most of the light reflected from water, glass, or any highly reflective surface is polarized horizontally. [Figure 15.11](#) shows the effect of a polarizing lens on light reflected from the surface of water.



Figure 15.11 These two photographs of a river show the effect of a polarizing filter in reducing glare in light reflected from the surface of water. Part (b) of this figure was taken with a polarizing filter and part (a) was taken without. As a result, the reflection of clouds and sky observed in part (a) is not observed in part (b). Polarizing sunglasses are particularly useful on snow and water.



WATCH PHYSICS

Polarization of Light, Linear and Circular

This video explains the polarization of light in great detail. Before viewing the video, look back at the drawing of an electromagnetic wave from the previous section. Try to visualize the two-dimensional drawing in three dimensions.

[Click to view content \(https://www.openstax.org/l/28Polarization\)](https://www.openstax.org/l/28Polarization)

GRASP CHECK

How do polarized glasses reduce glare reflected from the ocean?

- They block horizontally polarized and vertically polarized light.
- They are transparent to horizontally polarized and vertically polarized light.
- They block horizontally polarized rays and are transparent to vertically polarized rays.
- They are transparent to horizontally polarized light and block vertically polarized light.

Snap Lab

Polarized Glasses

- EYE SAFETY—Looking at the Sun directly can cause permanent eye damage. Avoid looking directly at the Sun.
- two pairs of polarized sunglasses
OR
- two lenses from one pair of polarized sunglasses

Procedure

- Look through both or either polarized lens and record your observations.
- Hold the lenses, one in front of the other. Hold one lens stationary while you slowly rotate the other lens. Record your observations, including the relative angles of the lenses when you make each observation.
- Find a reflective surface on which the Sun is shining. It could be water, glass, a mirror, or any other similar smooth surface. The results will be more dramatic if the sunlight strikes the surface at a sharp angle.
- Observe the appearance of the surface with your naked eye and through one of the polarized lenses.
- Observe any changes as you slowly rotate the lens, and note the angles at which you see changes.

GRASP CHECK

If you buy sunglasses in a store, how can you be sure that they are polarized?

- When one pair of sunglasses is placed in front of another and rotated in the plane of the body, the light passing through the sunglasses will be blocked at two positions due to refraction of light.
- When one pair of sunglasses is placed in front of another and rotated in the plane of the body, the light passing through the sunglasses will be blocked at two positions due to reflection of light.
- When one pair of sunglasses is placed in front of another and rotated in the plane of the body, the light passing through the sunglasses will be blocked at two positions due to the polarization of light.
- When one pair of sunglasses is placed in front of another and rotated in the plane of the body, the light passing through the sunglasses will be blocked at two positions due to the bending of light waves.

Quantitative Treatment of Electromagnetic Waves

We can use the speed of light, c , to carry out several simple but interesting calculations. If we know the distance to a celestial object, we can calculate how long it takes its light to reach us. Of course, we can also make the reverse calculation if we know the time it takes for the light to travel to us. For an object at a very great distance from Earth, it takes many years for its light to reach us. This means that we are looking at the object as it existed in the distant past. The object may, in fact, no longer exist. Very large distances in the universe are measured in light years. One light year is the distance that light travels in one year, which is 9.46×10^{12} kilometers or 5.88×10^{12} miles (...and 10^{12} is a trillion!).

A useful equation involving c is

$$c = f\lambda$$

15.1

where f is frequency in Hz, and λ is wavelength in meters.

**WORKED EXAMPLE****Frequency and Wavelength Calculation**

For example, you can calculate the frequency of yellow light with a wavelength of 6.00×10^{-7} m.

STRATEGY

Rearrange the equation to solve for frequency.

$$f = \frac{c}{\lambda}$$

15.2

Solution

Substitute the values for the speed of light and wavelength into the equation.

$$f = \frac{3.00 \times 10^8 \text{ m/s}}{6.00 \times 10^{-7} \text{ m}} = 5.00 \times 10^{14} \text{ s}^{-1} = 5.00 \times 10^{14} \text{ Hz}$$

15.3

Discussion

Manipulating exponents of 10 in a fraction can be tricky. Be sure you keep track of the + and – exponents correctly. Checking back to the diagram of the electromagnetic spectrum in the previous section shows that 10^{14} is a reasonable order of magnitude for the frequency of yellow light.

The frequency of a wave is proportional to the energy the wave carries. The actual proportionality constant will be discussed in a later chapter. Since frequency is inversely proportional to wavelength, we also know that wavelength is inversely proportional to energy. Keep these relationships in mind as general rules.

The rate at which light is radiated from a source is called **luminous flux**, P , and it is measured in **lumens** (lm). Energy-saving light bulbs, which provide more luminous flux for a given use of electricity, are now available. One of these bulbs is called a *compact fluorescent lamp*; another is an *LED* (light-emitting diode) bulb. If you wanted to replace an old incandescent bulb with an energy saving bulb, you would want the new bulb to have the same brightness as the old one. To compare bulbs accurately, you would need to compare the lumens each one puts out. Comparing wattage—that is, the electric power used—would be

misleading. Both wattage and lumens are stated on the packaging.

The luminous flux of a bulb might be 2,000 lm. That accounts for all the light radiated in all directions. However, what we really need to know is how much light falls on an object, such as a book, at a specific distance. The number of lumens per square meter is called **illuminance**, and is given in units of **lux** (lx). Picture a light bulb in the middle of a sphere with a 1-m radius. The total surface of the sphere equals $4\pi r^2$ m². The illuminance then is given by

$$\text{illuminance} = \frac{P}{4\pi r^2}. \quad \boxed{15.4}$$

What happens if the radius of the sphere is increased 2 m? The illuminance is now only one-fourth as great, because the r^2 term in the denominator is 4 instead of 1. [Figure 15.12](#) shows how illuminance decreases with the inverse square of the distance.

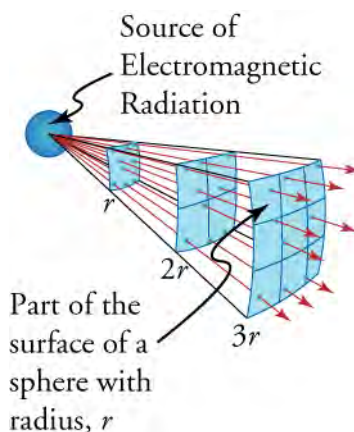


Figure 15.12 The diagram shows why the illuminance varies inversely with the square of the distance from a source of light.

WORKED EXAMPLE

Calculating Illuminance

A woman puts a new bulb in a floor lamp beside an easy chair. If the luminous flux of the bulb is rated at 2,000 lm, what is the illuminance on a book held 2.00 m from the bulb?

STRATEGY

Choose the equation and list the knowns.

$$\text{Equation: illuminance} = \frac{P}{4\pi r^2}$$

$$P = 2,000 \text{ lm}$$

$$\pi = 3.14$$

$$r = 2.00 \text{ m}$$

Solution

Substitute the known values into the equation.

$$\begin{aligned} \text{illuminance} &= \frac{P}{4\pi r^2} \\ &= \frac{2,000 \text{ lm}}{4(3.14)(2.00)^2 \text{ m}^2} \\ &= 39.8 \text{ lm/m}^2 \\ &= 39.8 \text{ lx} \end{aligned}$$

Discussion

Try some other distances to illustrate how greatly light fades with distance from its source. For example, at 3 m the illuminance is only 17.7 lux. Parents often scold children for reading in light that is too dim. Instead of shouting, “You’ll ruin your eyes!” it might be better to explain the inverse square law of illuminance to the child.

Practice Problems

6. Red light has a wavelength of 7.0×10^{-7} m and a frequency of 4.3×10^{14} Hz. Use these values to calculate the speed of light in a vacuum.
- 3×10^{20} m/s
 - 3×10^{15} m/s
 - 3×10^{14} m/s
 - 3×10^8 m/s
7. A light bulb has a luminous flux of 942 lumens. What is the illuminance on a surface 3.00 m from the bulb when it is lit?
- 33.32 lx
 - 26.15 lx
 - 2.77 lx
 - 8.33 lx

Check Your Understanding

8. Give an example of a place where light travels at the speed of 3.00×10^8 m/s.
- outer space
 - water
 - Earth's atmosphere
 - quartz glass
9. Explain in terms of distances and the speed of light why it is currently very unlikely that humans will visit planets that circle stars other than our Sun.
- The spacecrafts used for travel are very heavy and thus very slow.
 - Spacecrafts do not have a constant source of energy to run them.
 - If a spacecraft could attain a maximum speed equal to that of light, it would still be too slow to cover astronomical distances.
 - Spacecrafts can attain a maximum speed equal to that of light, but it is difficult to locate planets around stars.

KEY TERMS

electric field a field that tells us the force per unit charge at all locations in space around a charge distribution

electromagnetic radiation (EMR) radiant energy that consists of oscillating electric and magnetic fields

illuminance number of lumens per square meter, given in units of lux (lx)

interference increased or decreased light intensity caused by the phase differences between waves

lumens unit of measure for luminous flux

luminous flux rate at which light is radiated from a source

lux unit of measure for illuminance

magnetic field the directional lines around a magnetic material that indicates the direction and magnitude of the magnetic force

Maxwell's equations equations that describe the interrelationship between electric and magnetic fields, and how these fields combine to form electromagnetic radiation

polarized light light whose electric field component vibrates in a specific plane

SECTION SUMMARY

15.1 The Electromagnetic Spectrum

- The electromagnetic spectrum is made up of a broad range of frequencies of electromagnetic radiation.
- All frequencies of EM radiation travel at the same speed in a vacuum and consist of an electric field and a magnetic field. The types of EM radiation have different frequencies and wavelengths, and different energies and penetrating ability.

15.2 The Behavior of Electromagnetic Radiation

- EM radiation travels at different speeds in different media, produces colors on thin films, and can be polarized to oscillate in only one direction.
- Calculations can be based on the relationship among the speed, frequency, and wavelength of light, and on the relationship among luminous flux, illuminance, and distance.

KEY EQUATIONS

15.2 The Behavior of Electromagnetic Radiation

frequency and wavelength $c = f\lambda$

illuminance

$$\text{illuminance} = \frac{P}{4\pi r^2}$$

CHAPTER REVIEW

Concept Items

15.1 The Electromagnetic Spectrum

1. Use the concepts on which Maxwell's equations are based to explain why a compass needle is deflected when the compass is brought near a wire that is carrying an electric current.
 - a. The charges in the compass needle and the charges in the electric current have interacting electric fields, causing the needle to deflect.
 - b. The electric field from the moving charges in the current interacts with the magnetic field of the compass needle, causing the needle to deflect.
 - c. The magnetic field from the moving charges in the current interacts with the electric field of the compass needle, causing the needle to deflect.
 - d. The moving charges in the current produce a magnetic field that interacts with the compass

needle's magnetic field, causing the needle to deflect.

2. Consider these colors of light: yellow, blue, and red. Part A. Put these light waves in order according to wavelength, from shortest wavelength to longest wavelength. Part B. Put these light waves in order according to frequency, from lowest frequency to highest frequency.
 - a. wavelength: blue, yellow, red
frequency: blue, yellow, red
 - b. wavelength: red, yellow, blue
frequency: red, yellow, blue
 - c. wavelength: red, yellow, blue
frequency: blue, yellow, red
 - d. wavelength: blue, yellow, red
frequency: red, yellow, blue
3. Describe the location of gamma rays on the electromagnetic spectrum.

- At the high-frequency and long-wavelength end of the spectrum
 - At the high-frequency and short-wavelength end of the spectrum
 - At the low-frequency and long-wavelength end of the spectrum
 - At the low-frequency and short-wavelength end of the spectrum
- In which region of the electromagnetic spectrum would you find radiation that is invisible to the human eye and has low energy?
 - Long-wavelength and high-frequency region
 - Long-wavelength and low-frequency region
 - Short-wavelength and high-frequency region
 - Short-wavelength and low-frequency region

15.2 The Behavior of Electromagnetic Radiation

- Light travels at different speeds in different media. Put these media in order, from the slowest light speed to the fastest light speed: air, diamond, vacuum, water.
 - diamond, water, air, vacuum
 - vacuum, diamond, air, water
 - diamond, air, water, vacuum
 - air, diamond, water, vacuum
- Visible light has wavelengths in the range of about 400 to 800 nm. What does this indicate about the approximate

Critical Thinking Items

15.1 The Electromagnetic Spectrum

- Standing in front of a fire, we can sense both its heat and its light. How are the light and heat radiated by the fire the same, and how are they different?
 - Both travel as waves, but only light waves are a form of electromagnetic radiation.
 - Heat and light are both forms of electromagnetic radiation, but light waves have higher frequencies.
 - Heat and light are both forms of electromagnetic radiation, but heat waves have higher frequencies.
 - Heat and light are both forms of electromagnetic radiation, but light waves have higher wavelengths.
- Light shines on a picture of the subtractive color wheel. The light is a mixture of red, blue, and green light.

Part A—Which part of the color wheel will look blue? Explain in terms of absorbed and reflected light.

Part B—Which part of the color wheel will look yellow? Explain in terms of absorbed and reflected light.

 - A. The yellow section of the wheel will look blue because it will reflect blue light and absorb red

thickness of the wall of a soap bubble? Explain your answer.

- The thickness of the bubble wall is ten times that of the wavelength of light.
 - The thickness of the bubble wall is similar to that of the wavelength of light.
 - The thickness of the bubble wall is half the wavelength of light.
 - The thickness of the bubble wall equals the cube of the wavelength of light.
- Bright sunlight is reflected from an icy pond. You look at the glare of the reflected light through polarized glasses. When you take the glasses off, rotate them 90° , and look through one of the lenses again, the light you see becomes brighter. Explain why the light you see changes.
 - The glass blocks horizontally polarized light, and the light reflected from the icy pond is, in part, polarized horizontally.
 - The glass blocks vertically polarized light, and the light reflected from the icy pond is, in part, polarized vertically.
 - The glass allows horizontally polarized light to pass, and the light reflected from the icy pond is, in part, polarized vertically.
 - The glass allows horizontally polarized light to pass, and the light reflected from the icy pond is, in part, polarized horizontally.
- and green.
 - The blue section of the wheel will look yellow because it will reflect red and green light and absorb blue.
 - A. The blue section of the wheel will look blue because it will absorb blue light and reflect red and green.
 - B. The yellow section of the wheel will look yellow because it will absorb red and green light and reflect blue.
 - A. The yellow section of the wheel will look blue because it will absorb blue light and reflect red and green.
 - B. The blue section of the wheel will look yellow because it will absorb red and green light and reflect blue.
 - A. The blue section of the wheel will look blue because it will reflect blue light and absorb red and green.
 - B. The yellow section of the wheel will look yellow because it will reflect red and green light and absorb blue.

10. Part A. When you stand in front of an open fire, you can sense light waves with your eyes. You sense another type of electromagnetic radiation as heat. What is this other type of radiation?

Part B. How is this other type of radiation different from light waves?

- a. A. X-rays
B. The X-rays have higher frequencies and shorter wavelengths than the light waves.
- b. A. X-rays
B. The X-rays have lower frequencies and longer wavelengths than the light waves.
- c. A. infrared rays
B. The infrared rays have higher frequencies and shorter wavelengths than the light waves.
- d. A. infrared rays
B. The infrared rays have lower frequencies and longer wavelengths than the light waves.
11. Overexposure to this range of EM radiation is dangerous, and yet it is used by doctors to diagnose medical problems.
Part A—Identify the type of radiation.
Part B—Locate the position of this radiation on the EM spectrum by comparing its frequency and wavelength to visible light.
Part C—Explain why this radiation is both dangerous and therapeutic in terms of its energy, based on your answer to Part B.
- a. A. X-rays
B. X-rays have shorter wavelengths ($1 \times 10^{-8} - 5 \times 10^{-12}$ m) and higher frequencies ($3 \times 10^{16} - 6 \times 10^{19}$ Hz) than visible light ($7.5 \times 10^{-7} - 4.0 \times 10^{-7}$ m; $4.0 \times 10^{14} - 7.5 \times 10^{14}$ Hz).
C. X-rays have low energies because of their high frequencies, and so can penetrate matter to greater depths.
- b. A. X-rays
B. X-rays have shorter wavelengths ($1 \times 10^{-8} - 5 \times 10^{-12}$ m) and higher frequencies ($3 \times 10^{16} - 6 \times 10^{19}$ Hz) than visible light ($7.5 \times 10^{-7} - 4.0 \times 10^{-7}$ m; $4.0 \times 10^{14} - 7.5 \times 10^{14}$ Hz).
C. X-rays have low energies because of their low frequencies, and so can penetrate matter to greater depths.
- c. A. X-rays B. X-rays have longer wavelengths ($1 \times 10^{-6} - 5 \times 10^{-7}$ m) and higher frequencies ($3 \times 10^{15} - 6 \times 10^{15}$ Hz) than visible light ($7.5 \times 10^{-7} - 4.0 \times 10^{-7}$ m; $4.0 \times 10^{14} - 7.5 \times 10^{14}$ Hz).
C. X-rays have high energies because of their high

frequencies, and therefore can penetrate matter to greater depths.

- d. A. X-rays
B. X-rays have shorter wavelengths ($1 \times 10^{-8} - 5 \times 10^{-12}$ m) and higher frequencies ($3 \times 10^{16} - 6 \times 10^{19}$ Hz) than visible light ($7.5 \times 10^{-7} - 4.0 \times 10^{-7}$ m; $4.0 \times 10^{14} - 7.5 \times 10^{14}$ Hz).
C. X-rays have high energies because of their high frequencies, and so can penetrate matter to greater depths.

15.2 The Behavior of Electromagnetic Radiation

12. Explain how thin-film interference occurs. Discuss in terms of the meaning of interference and the pathways of light waves.
- a. For a particular thickness of film, light of a given wavelength that reflects from the outer and inner film surfaces is completely in phase, and so undergoes constructive interference.
- b. For a particular thickness of film, light of a given wavelength that reflects from the outer and inner surfaces is completely in phase, and so undergoes destructive interference.
- c. For a particular thickness of film, light of a given wavelength that reflects from the outer and inner film surfaces is completely out of phase, and so undergoes constructive interference.
- d. For a particular thickness of film, light of a given wavelength that reflects from the outer and inner film surfaces is completely out of phase, and so undergoes no interference.
13. When you move a rope up and down, waves are created. If the waves pass through a slot, they will be affected differently, depending on the orientation of the slot. Using the rope waves and the slot as a model, explain how polarizing glasses affect light waves.
- a. If the wave—electric field—is vertical and slit—polarizing molecules in the glass—is horizontal, the wave will pass.
- b. If the wave—electric field—is vertical and slit—polarizing molecules in the glass—is vertical, the wave will not pass.
- c. If the wave—electric field—is horizontal and slit—polarizing molecules in the glass—is horizontal, the wave will pass.
- d. If the wave—electric field—is horizontal and slit—polarizing molecules in the glass—is horizontal, the wave will not pass.

Problems

15.2 The Behavior of Electromagnetic Radiation

14. Visible light has a range of wavelengths from about 400 nm to 800 nm. What is the range of frequencies for visible light?
- 3.75×10^6 Hz to 7.50×10^6 Hz
 - 3.75 Hz to 7.50 Hz
 - 3.75×10^{-7} Hz to 7.50×10^{-7} Hz
 - 3.75×10^{14} Hz to 7.50×10^{14} Hz

Performance Task

15.2 The Behavior of Electromagnetic Radiation

16. Design an experiment to observe the phenomenon of thin-film interference. Observe colors of visible light, and relate each color to its corresponding wavelength. Comparison with the magnitudes of visible light wavelength will give an appreciation of just how very thin a thin film is. Thin-film interference has a number of practical applications, such as anti-reflection coatings and optical filters. Thin films used in filters can be designed to reflect or transmit specific wavelengths of light. This is done by depositing a film one molecular layer at a time from a vapor, thus allowing the thickness of the film to be exactly controlled.
- EYE SAFETY**—Chemicals in this lab are poisonous if ingested. If chemicals are ingested, inform your teacher immediately.
 - FUMES**—Certain chemicals or chemical reactions in this lab create a vapor that is harmful if inhaled. Follow your teacher's instructions for the use of fume hoods and other safety apparatus designed to prevent fume inhalation. Never smell or otherwise breathe in any chemicals or vapors in the lab.
 - FLAMMABLE**—Chemicals in this lab are highly flammable and can ignite, especially if exposed to a spark or open flame. Follow your teacher's

15. Light travels through the wall of a soap bubble that is 600 nm thick and is reflected from the inner surface back into the air. Assume the bubble wall is mostly water and that light travels in water at 75 percent of the speed of light in vacuum. How many seconds behind will the light reflected from the inner surface arrive compared to the light that was reflected from the outer surface?
- 4.0×10^{-8} s
 - 5.3×10^{-6} s
 - 2.65×10^{-15} s
 - 5.3×10^{-15} s

instructions carefully on how to handle flammable chemicals. Do not expose any chemical to a flame or other heat source unless specifically instructed by your teacher.

- HAND WASHING**—Some materials may be hazardous if in extended contact with the skin. Be sure to wash your hands with soap after handling and disposing of these materials during the lab.
 - WASTE**—Some things in this lab are hazardous and need to be disposed of properly. Follow your teacher's instructions for disposal of all items.
- A large flat tray with raised sides, such as a baking tray
 - Small volumes of motor oil, lighter fluid or a penetrating oil of the type used to loosen rusty bolts, and cooking oil
 - Water
 - A camera
- Thin-film interference causes colors to appear on the surface of a thin transparent layer. Do you expect to see a pattern to the colors?
 - How could you make a permanent record of your observations?
 - What data would you need to look up to help explain any patterns that you see?
 - What could explain colors failing to appear under some conditions?

TEST PREP

Multiple Choice

15.1 The Electromagnetic Spectrum

17. Which type of EM radiation has the shortest wavelengths?
- gamma rays
 - infrared waves
 - blue light
 - microwaves

18. Which form of EM radiation has the most penetrating ability?
- red light
 - microwaves
 - gamma rays
 - infrared radiation
19. Why are high-frequency gamma rays more dangerous to humans than visible light?
- Gamma rays have a lower frequency range than

- visible light.
- Gamma rays have a longer wavelength range than visible light.
 - Gamma rays have greater energy than visible light for penetrating matter.
 - Gamma rays have less energy than visible light for penetrating matter.
20. A dog would have a hard time stalking and catching a red bird hiding in a field of green grass. Explain this in terms of cone cells and color perception.
- Dogs are red-green color-blind because they can see only blue and yellow through two kinds of cone cells present in their eyes.
 - Dogs are only red color-blind because they can see only blue and yellow through two kinds of cones cells present in their eyes.
 - Dogs are only green color-blind because they can see only blue and yellow through two kinds of cones cells present in their eyes.
 - Dogs are color-blind because they have only rods and no cone cells present in their eyes.
- 15.2 The Behavior of Electromagnetic Radiation**
21. To compare the brightness of light bulbs for sale in a store, you should look on the labels to see how they are rated in terms of ____.
- frequency
 - watts
 - amps
 - lumens
22. What is the wavelength of red light with a frequency of 4.00×10^{14} Hz?
- 2.50×10^{14} m
 - 4.00×10^{15} m
 - 2.50×10^6 m
 - 4.00×10^{-7} m
23. What is the distance of one light year in kilometers?
- 2.59×10^{10} km
 - 1.58×10^{11} km
 - 2.63×10^9 km
 - 9.46×10^{12} km
24. How does the illuminance of light change when the distance from the light source is tripled? Cite the relevant equation and explain how it supports your answer.
- Illuminance = $\frac{P}{4\pi r^2}$; if distance is tripled, then the illuminance increases by 19 times.
 - Illuminance = $\frac{P}{4\pi r}$; if distance is tripled, then the illuminance decreases by 13 times.
 - Illuminance = $P \cdot 4\pi r^2$; if distance is tripled, then the illuminance decreases by 9 times.
 - Illuminance = $P \cdot 4\pi r$; if distance tripled, then the illuminance increases by 3 times.
25. A light bulb has an illuminance of 19.9 lx at a distance of 2 m. What is the luminous flux of the bulb?
- 500 lm
 - 320 lm
 - 250 lm
 - 1,000 lm

Short Answer

15.1 The Electromagnetic Spectrum

26. Describe one way in which heat waves—infrared radiation—are different from sound waves.
- Sound waves are transverse waves, whereas heat waves—infrared radiation—are longitudinal waves.
 - Sound waves have shorter wavelengths than heat waves.
 - Sound waves require a medium, whereas heat waves—infrared radiation—do not.
 - Sound waves have higher frequencies than heat waves.
27. Describe the electric and magnetic fields that make up an electromagnetic wave in terms of their orientation relative to each other and their phases.
- They are perpendicular to and out of phase with each other.
 - They are perpendicular to and in phase with each other.
 - They are parallel to and out of phase with each other.
 - They are parallel to and in phase with each other.
28. Explain how X-radiation can be harmful and how it can be a useful diagnostic tool.
- Overexposure to X-rays can cause HIV, though normal levels of X-rays can be used for sterilizing needles.
 - Overexposure to X-rays can cause cancer, though in limited doses X-rays can be used for imaging internal body parts.
 - Overexposure to X-rays causes diabetes, though normal levels of X-rays can be used for imaging internal body parts.
 - Overexposure to X-rays causes cancer, though normal levels of X-rays can be used for reducing

cholesterol in the blood.

29. Explain how sunlight is the original source of the energy in the food we eat.
- Sunlight is converted into chemical energy by plants; this energy is released when we digest food.
 - Sunlight is converted into chemical energy by animals; this energy is released when we digest food.
 - Sunlight is converted into chemical energy by fish; this energy is released when we digest food.
 - Sunlight is converted into chemical energy by humans; this energy is released when we digest food.

15.2 The Behavior of Electromagnetic Radiation

30. Describe what happens to the path of light when the light slows down as it passes from one medium to another?
- The path of the light remains the same.
 - The path of the light becomes circular.
 - The path of the light becomes curved.
 - The path of the light changes.

Extended Response

15.1 The Electromagnetic Spectrum

34. A frequency of red light has a wavelength of 700 nm.
- Part A—Compare the wavelength and frequency of violet light to red light.
- Part B—Identify a type of radiation that has lower frequencies than red light.
- Part C—Identify a type of radiation that has shorter wavelengths than violet light.
- A. Violet light has a lower frequency and longer wavelength than red light.
B. ultraviolet radiation
C. infrared radiation
 - A. Violet light has a lower frequency and longer wavelength than red light.
B. infrared radiation
C. ultraviolet radiation
 - A. Violet light has a higher frequency and shorter wavelength than red light.
B. ultraviolet radiation
C. infrared radiation
 - A. Violet light has a higher frequency and shorter wavelength than red light.
B. infrared radiation

- What is it about the nature of light reflected from snow that causes skiers to wear polarized sunglasses?
 - The reflected light is polarized in the vertical direction.
 - The reflected light is polarized in the horizontal direction.
 - The reflected light has less intensity than the incident light.
 - The reflected light has triple the intensity of the incident light.
- How many lumens are radiated from a candle which has an illuminance of 3.98 lx at a distance of 2.00 m?
 - 400 lm
 - 100 lm
 - 50 lm
 - 200 lm
- Saturn is 1.43×10^{12} m from the Sun. How many minutes does it take the Sun's light to reach Saturn?
 - 7.94×10^9 minutes
 - 3.4×10^4 minutes
 - 3.4×10^{-6} minutes
 - 79.4 minutes

C. ultraviolet radiation

35. A mixture of red and green light is shone on each of the subtractive colors.
- Part A—Which of these colors of light are reflected from magenta?
- Part B—Which of these colors of light are reflected from yellow?
- Part C—Which these colors of light are reflected from cyan?
- Part A. red and green
Part B. green
Part C. red
 - Part A. red and green
Part B. red
Part C. green
 - Part A. green
Part B. red and green
Part C. red
 - Part A. red
Part B. red and green
Part C. green

15.2 The Behavior of Electromagnetic Radiation

36. Explain why we see the colorful effects of thin-film interference on the surface of soap bubbles and oil

slicks, but not on the surface of a window pane or clear plastic bag.

- a. The thickness of a window pane or plastic bag is more than the wavelength of light, and interference occurs for thicknesses smaller than the wavelength of light.
 - b. The thickness of a window pane or plastic bag is less than the wavelength of light, and interference occurs for thicknesses similar to the wavelength of light.
 - c. The thickness of a window pane or plastic bag is more than the wavelength of light, and interference occurs for thicknesses similar to the wavelength of light.
 - d. The thickness of a window pane or plastic bag is less than the wavelength of light, and interference occurs for thicknesses larger than the wavelength of light.
37. The Occupational Safety and Health Administration (OSHA) recommends an illuminance of 500 lx for desktop lighting. An office space has lighting hung 2.50 m above desktop level that provides only 300 lx. To what height would the lighting fixtures have to be lowered to provide 500 lx on desktops?
- a. 1.22 m
 - b. 1.09 m
 - c. 0.96 m
 - d. 1.94 m